

# Koala<sup>®</sup> IUPC

Intrauterine Pressure Catheter



The Koala Intrauterine Pressure Catheter is the only IUPC that has no electronics in the catheter. The external transducer provides easy, true zeroing *in utero*.

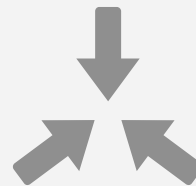


## Intrapartum Intrauterine Monitoring



### Optimized for Proper Placement

Clear lumen catheter provides visual feedback of proper placement



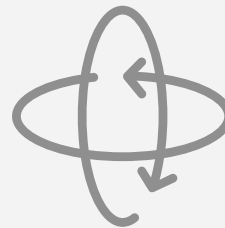
### Smaller Tip for Insertion

Koala's small, soft, malleable urethane tip is smaller than transducer-tipped catheters



### Easy True Zeroing

With transducer in reusable cable, 'true' zero can be obtained *in utero*

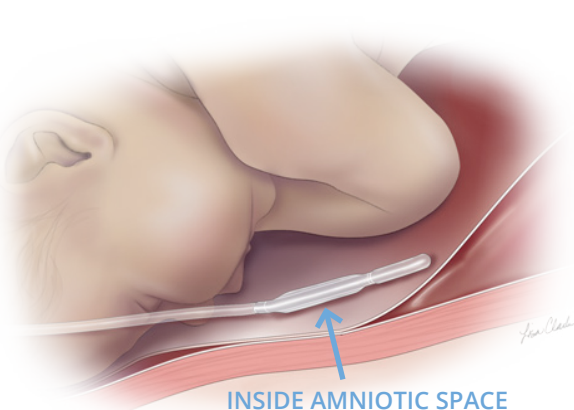


### 360° Sensing

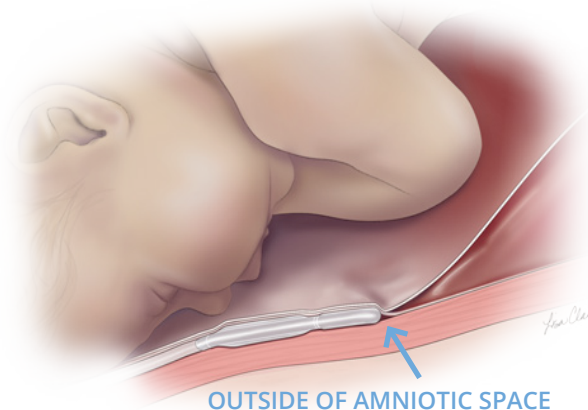
Circumferential sensor provides readings around entire tip of catheter

## Proper Placement for Reliable Readings

### Proper Placement



### Improper Placement



### Proper Placement

- Amniotic fluid in amniolumen
- Crisp waveform, good baseline

### Improper Placement

- Blood in amniolumen
- Poor readings, high baseline, damped waveform

# What is True Zero

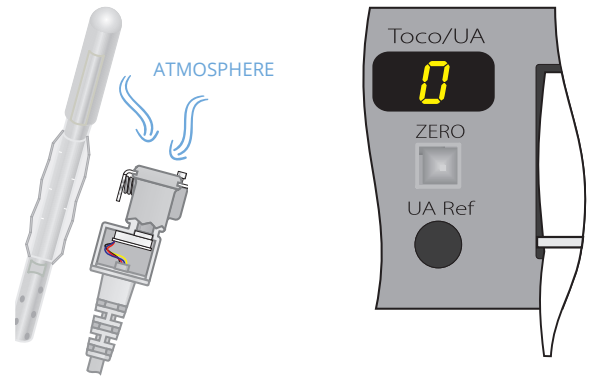
## What is Zeroing?

Zeroing is the process of establishing a baseline, or zero, on the fetal monitor from which changes in the intrauterine pressure can be measured.

## What is True Zero?

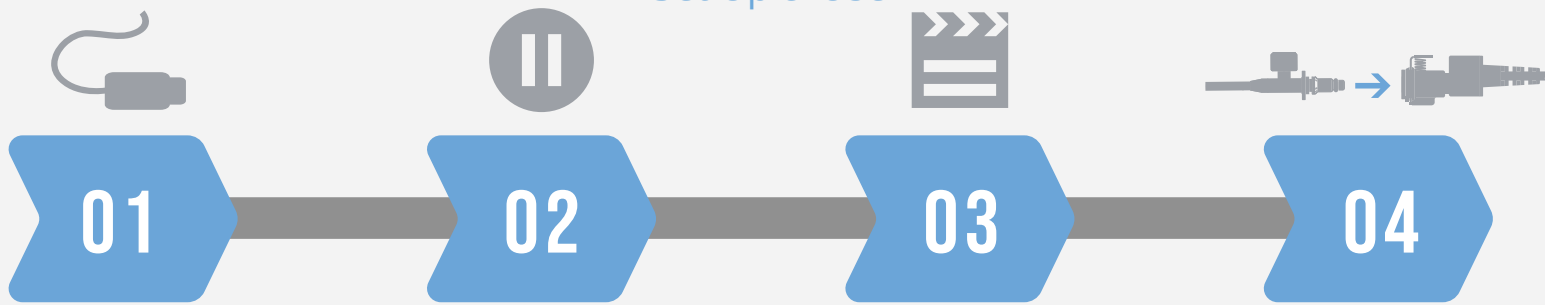
True zero is obtained by pressing the fetal monitor's zero button when, and only when, the systems transducer is exposed to atmospheric pressure.

Koala is the only sensor-tipped catheter that can obtain a true zero while the catheter is *in utero*, because the transducer is located in the reusable cable.



True zero can be obtained anytime by disconnecting catheter from the cable and exposing transducer to atmospheric pressure while zeroing monitor.

## Set Up & Use



### 01 Plug Cable into Monitor

Plug reusable cable into fetal monitor

### 02 Insert & Pause

Advance Koala 10-14cm and pause for flashback confirmation

### 03 Advance

Advance Koala until double mark (45cm) is at introitus and then secure

### 04 Zero & Connect

Zero monitor and then connect reusable cable to Koala catheter

[See Instructions for Use for full instructions, warnings, precautions and contraindications](#)

## Product Support

### Ordering Information

Product Description	Product Code	Box Quantity	Monitor Cables	Product Code	Box Quantity
Koala Intrauterine Pressure Catheter	CI IPC-5000E	10/ea	Philips 8040A (40V/mmHg)	CI IPC-5018	1 Cable
			Philips Avalon	CI IPC-5080	1 Cable
			All other Philips Monitors	CI IPC-5012	1 Cable
			GE Medical (Corometrics) All Models	CI IPC-5014	1 Cable
			Air-Shields (Litton) Fetascan 1400	CI IPC-5016	1 Cable
			Spacelabs Medical (AMS) Spacelabs 94000	CI IPC-5050	1 Cable
			Neovent Medical Stan S31	CI IPC-5060	1 Cable
			Edan Instruments, Inc.	CI IPC-5090	1 Cable

### Local Distributor:

**clinicalinnovations.com.au**  
 36 Matheson Street, Virginia  
 Queensland 4014 | Australia  
 Phone +07 3862 2000 | Fax +07 3862 2077  
[orders@clinicalinnovations.com.au](mailto:orders@clinicalinnovations.com.au)

